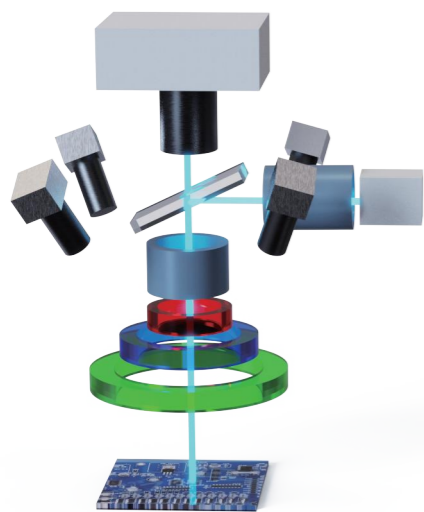


# 侧面相机 AI 3D AOI

3D+AI 一次检测所有缺陷  
3D+AI detects all defects at once



## 3D光学系统 3D OPTICAL SYSTEM



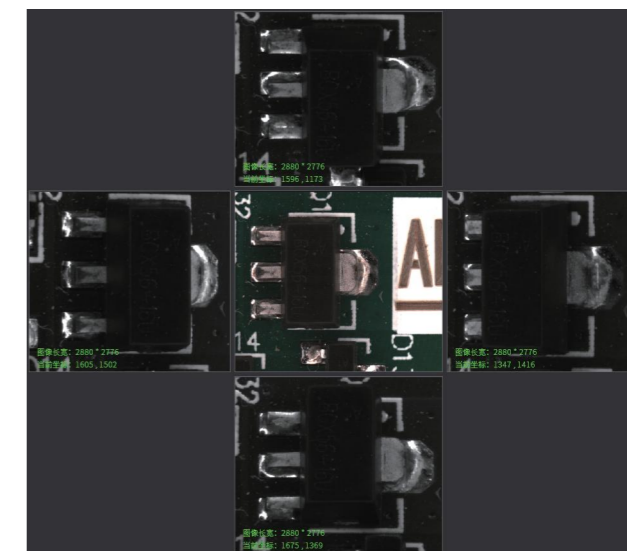
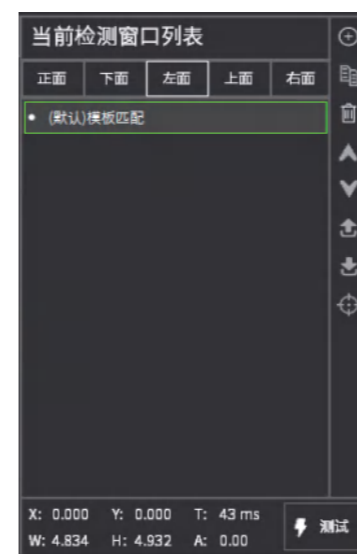
全自研多相机3D摩尔条纹系统突破解决传统3D AOI无法准确重建难题，真实还原3D爬锡，使得纯3D爬锡检测成为可能；  
全新Pro 3D设备理论检测速度是传统3D检测速度的4倍!!!  
侧面3D相机是业界唯一可以承诺100%检出QFN/IC引脚焊接不良的方案。

The self-developed multi-camera 3D Moiré fringe system breaks through the problem that traditional 3D AOI cannot accurately reconstruct, achieving the true restoration of 3D solder climbing, making pure 3D solder climbing detection possible.  
The brand-new Pro 3D equipment has a detection speed four times faster than traditional 3D inspection!!!  
The side-view 3D camera is the industry's only solution that can guarantee 100% detection of QFN/IC pin soldering defects.

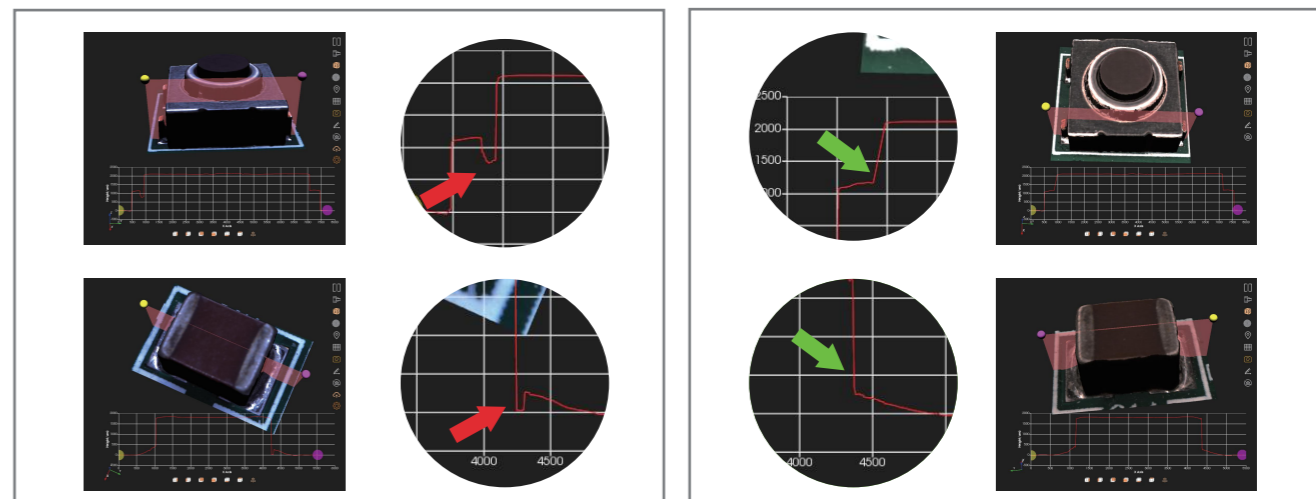
## 多角度编程 MULTI ANGLE PROGRAMMING

ALPHA PRO可提供侧面相机图像支持侧面相机多角度编程

Alpha Pro can provide side camera images to support multi-angle encoding.



## 爬锡检测效果 CRAWLING TIN DETECTION EFFECT



普通3D AOI 无法精准采集爬锡数据  
Traditional 3D AOI cannot accurately capture solder paste data.

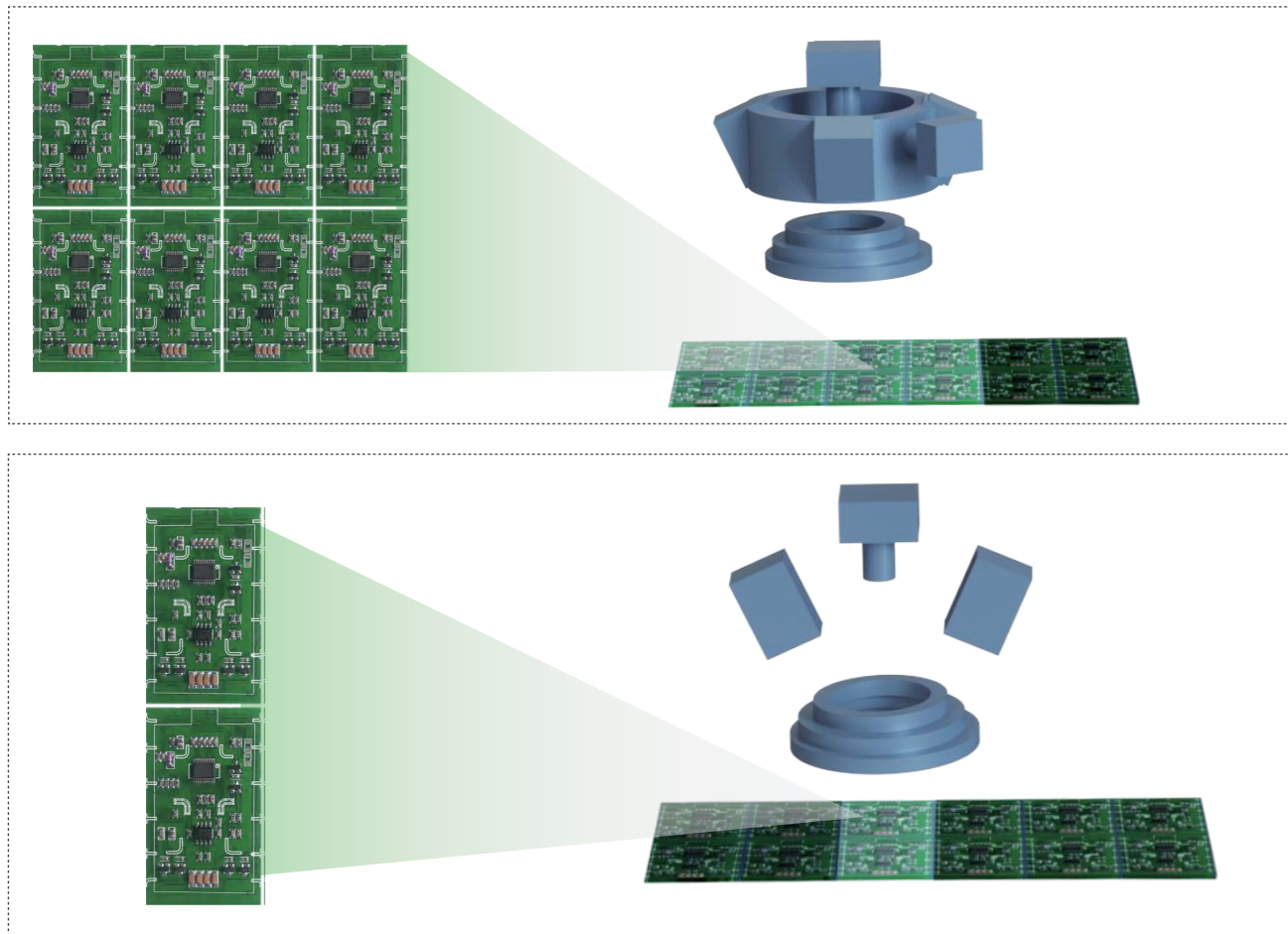
德中Alpha Pro AOI 可以精准采集爬锡数据  
DZ Alpha Pro AOI can accurately capture solder paste data.



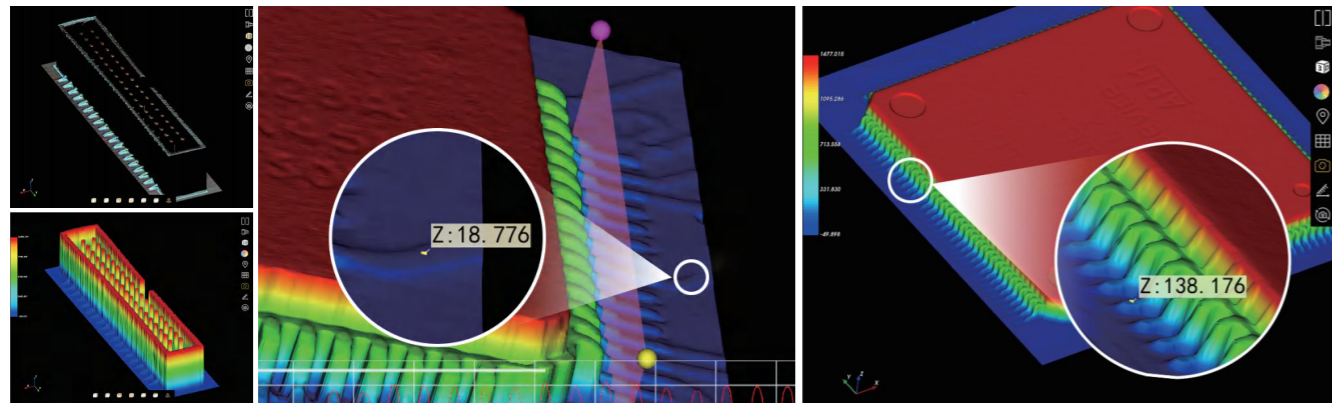
## 检测速度 DETECTION SPEED

Alpha Pro设备比传统3D AOI 理论速度为侧边摩尔条纹方案的4倍

Alpha Pro devices have a speed four times faster than traditional 3D AOI with side Moore stripe schemes



## 引脚效果 PIN EFFECT



## 设备参数 EQUIPMENT PARAMETERS

系列产品 Model		Alpha X510 Pro	Alpha X510D Pro
类型 Type		单轨 Single Lane	双轨 Dual Lane
视觉系统 Vision system	主相机 Camera	12MP工业相机 (21MP选配 Optional) 12MP Industrial Camera	
	侧面相机 Side Camera	四向8MP工业相机 4-way 8MP Industrial Camera	
	解析度 Resolution	5μm/10μm/15μm	
	检测速度 Inspect Speed	15cm <sup>2</sup> /s 60cm <sup>2</sup> /s 135cm <sup>2</sup> /s	
	照明 illumination	RGBW LED	
运动机构 Motion mechanism	投影仪 Projector	1路DLP投影仪 1-way DLP projector	
	XY运动 XY motion	AC伺服马达 AC servo motor	
	精度 Accuracy	±1μm	
	流向 Flow direction	可定制 Customizable	
硬件 Hardware	轨道高度(mm) Track height	900±30mm	
	电源 Power Supply	200V-230V AC 50/60Hz	
	功率 Power	2.2KW	
	气压 Pressure	0.4-0.6MP	
	重量 Weight	1100KG	1200KG
检查规格 Check specifications	设备尺寸(mm) Equipment size	W1156*D1475*H1640mm	W1156*D1700*H1640mm
	基板尺寸(mm) PCB size	50*50~510*460mm	50*50~510*330mm (双轨 Dual Lane) 50*50~510*600mm (单轨 Single Lane)
	基板厚度(mm) PCB thickness	0.6~6mm	
选配功能 Optional function	测量高度 Measure height	最高可测定高30mm的部件 Parts up to 30mm in height can be measured	
	人工智能 Artificial intelligence	AI大数据训练中心 AI data training center	
检查项目 Inspection items	辅助功能 Auxiliary function	远程集中复判、条码读取、OCR识别 Remote repair、Barcode reading、OCR recognition	
	缺陷检测 Defect type	缺件、偏移、反向、浮高、侧立、立碑、焊点不良、锡珠、氧化污染、异物、划伤等 Missing、Shift、Polarity、Flatness、Sideward、Tombstone、Solder joint、Solder ball Contaminated、Particle、Scratch	

## 产品外观尺寸 PRODUCT DIMENSION

