



在线激光分板机 ONLINE LASER DEPANELING MACHINE

- ◆ 三段式轨道传送
Three-stage rail transfer
- ◆ 结构紧凑, 坚固稳定
Compact structure, solid and stable
- ◆ 可搭载多种激光器
Collocation with a variety of lasers
- ◆ 无接触加工
Contact-free processing
- ◆ 洁净无尘
Clean and dust-free
- ◆ 直接数据驱动
Direct data driven
- ◆ 高效高精度
High efficiency and high precision
- ◆ 自动化
Automation
- ◆ 操作简单易维护
Easy operation and maintenance

激光分板优势 LASER CUTTING ADVANTAGES

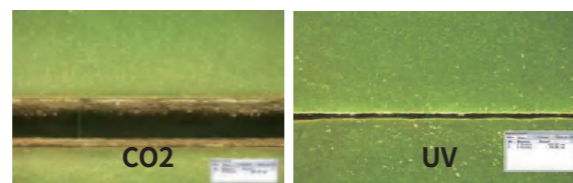
非接触
无机应力和变形
non-contact
No mechanical stress and deformation

适应性广
可加工任意复杂图形
兼容多种材料
Wide adaptability
Can process any complex graphics
compatible with a variety of materials

环境友好
粉尘少, 高效节能
environment-friendly
Less dust, high efficiency and energy saving

高精度
切缝窄, 热影响低
high-accuracy
Narrow cut joint and low thermal impact

| 加工方式 processing method | 切缝宽度Cutting width |
|---|-------------------|
| 常规机械方法 Conventional mechanical methods | 0.5-1.0 mm |
| CO2/红外激光 CO2/ infrared laser | 80 - 120 μm |
| 紫外激光 UV laser | <50 μm |



切缝宽度对比
Cutting width comparison

应用对象 APPLICATION OBJECTS

PCBA硬板外形高精度快速全切、断点切割分板; 软硬板结合电路板外形切割
High precision fast full cutting, breakpoint cutting partition for PCBA hard board shape;
rigid-flexible combined circuit board shape cutting

激光分板应用 LASER CUTTING APPLICATION

应用领域: 半导体、集成电路、通信、照明等
Application fields: semiconductors, integrated circuits, communication, lighting, etc
应用对象: LCP、MPI、PI、FR4、FR5和CEM以及聚酯材料、陶瓷材料和其它射频材料
Application object: LCP, MPI, PI, FR4, FR5 and CEM and polyester, ceramic and other RF materials

设备参数 EQUIPMENT PARAMETERS

| 型号 Model | S4系列/S4 Series |
|---|---|
| 平台类型 Platform type | 单平台 Single platform |
| 加工范围 Working range | 350*350mm |
| 重复精度 Repeated accuracy | ±2μm |
| 综合精度 Comprehensive accuracy | ±20μm |
| X/Y分辨率 X/Y resolution ratio | 0.5μm |
| 可加工材料厚度 Thickness of machined materials | ≤2.0mm |
| 平台结构 Platform structure | 大理石平台 + 直线电机 Marble platform + linear motor |
| 激光类型 Laser type | 绿光/紫外可选, 纳秒/皮秒可选 GR laser / UV laser ,nanosecond / picosecond |
| 激光功率 Laser power | 功率可选 Power optional |
| 远心透镜范围 Telecentric lens range | 50*50mm f=100mm |
| CCD结构 CCD structure | 旁轴 Off-axis |
| 视觉定位精度 Visual positioning accuracy | 0.01mm |
| 摄像头分辨率 Camera resolution | 130万像素 1.3 Megapixel |
| 摄像头视场 Camera view field | 4.5mm*3.5mm |
| 摄像头靶标对位系统 Camera targeting system | 标配 yes |
| 工业吸尘系统 Industrial vacuum system | 标配 yes |
| 在线工作形式 Online work form | 三段式轨道传送料 Three-section guide rail transfer material (H4) |
| 设备控制软件 Data processing software | DreamCreaTor 3 |
| 数据处理软件 Data processing software | CircuitCAM7 |
| 文件格式 File format | LMD, 标准 Gerber (RS-274-D), 扩展 Gerber (RS-274-X), LMD, standard Gerber (RS-274-D), Expand Gerber (RS-274-X), DXF, Excellon, Sieb & Meier, HP-GL, Barco DPF, ODB++ |
| MES系统连接 MES system connection | Mes: 预留标准接口, 可选定制采集信息 MES: Reserved standard interface, optional customization for collecting information. |
| 外形尺寸 (W*D*H) | 930W*1270D*1600Hmm |
| 工作环境 Work environment | 温度: 22°C ± 2°C; 湿度: ≤60%; 洁净度: 基本防尘措施, 远离尘源, 推荐万级洁净度 Temperature: 22°C ± 2°C; humidity: 60%; cleanliness: basic dust-proof measures, far away from the dust source, recommended ten grade cleanliness |
| 电源 Power source | 380VAC/50Hz/2KW |
| 气源 Air supply | 6bar, 100L/min, Φ8mm硬管快插接口 6bar, 100L/min, Φ8mm, Hard pipe fast plug interface |
| 重量 Weight | 1500KG |