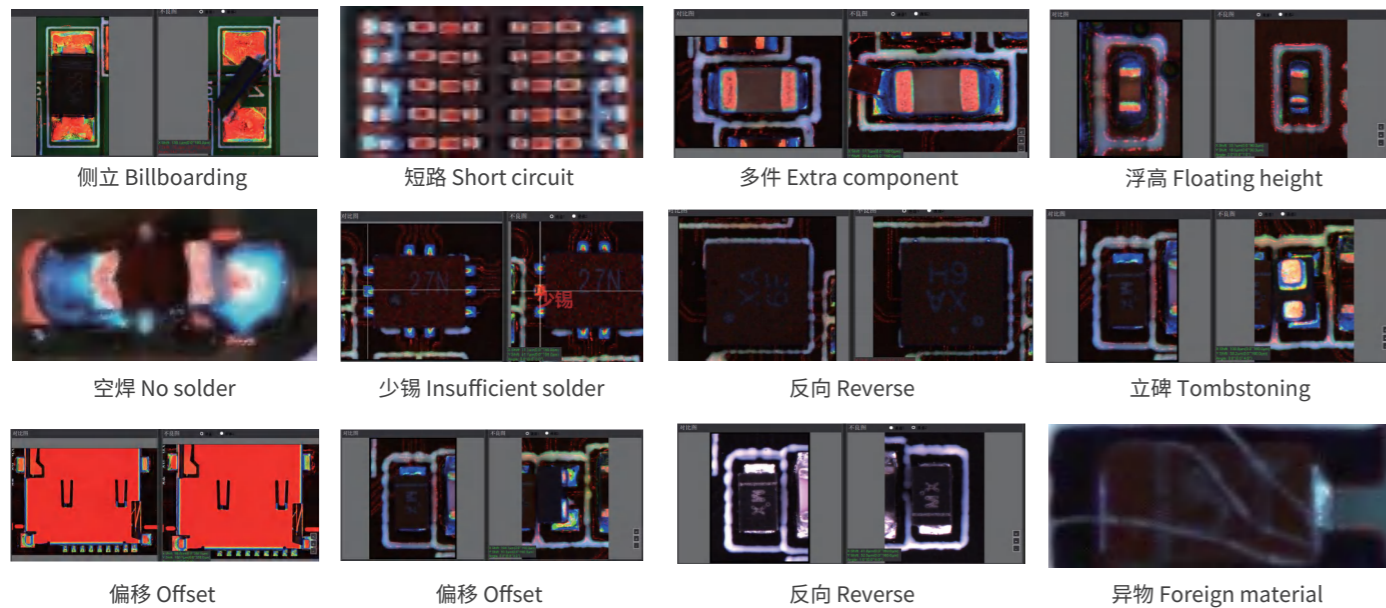


# 2D AOI

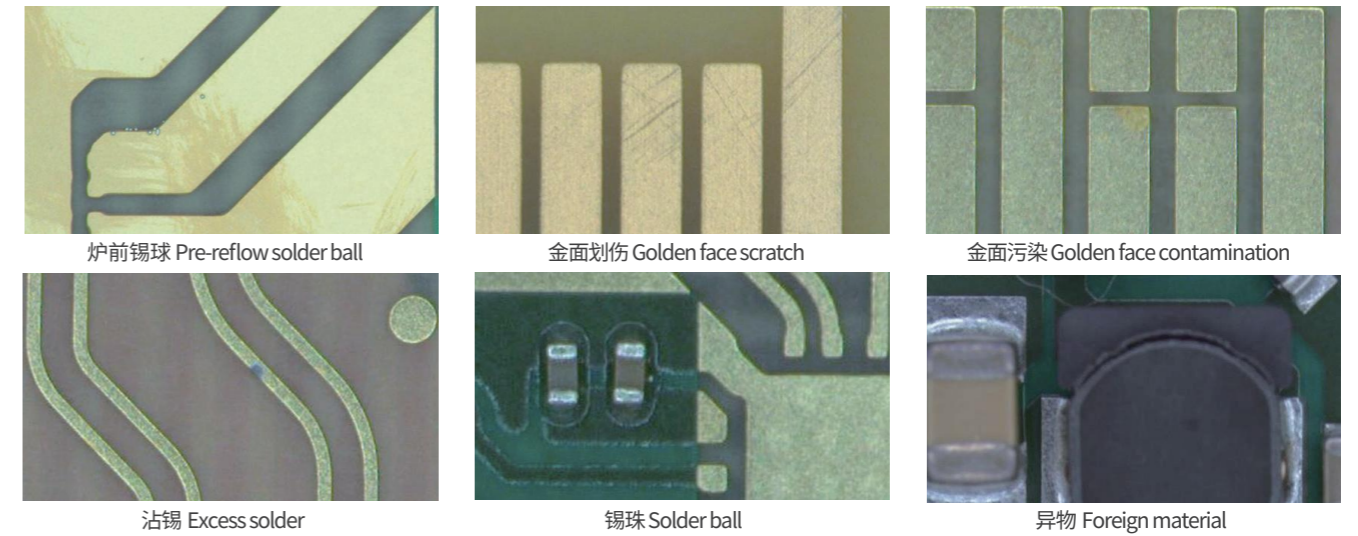
## 荣耀系列 Honour Series



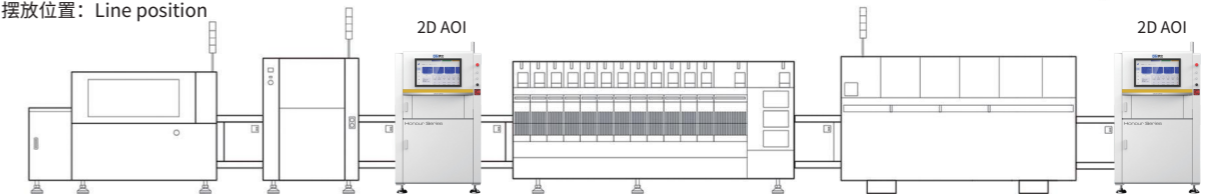
### 常见缺陷检测 COMMON DEFECTS



### AI可检测缺陷 AI DETECTABLE DEFECTS



摆放位置: Line position



### 设备参数 EQUIPMENT PARAMETERS

系列产品 Series		荣耀先锋版 单面单轨 Single-sided single-Lane	荣耀冠军版 单面单轨 Single-sided single-Lane	荣耀旗舰版 双头双轨 Dual-head dual-Lane
视觉系统 Visual System	成像 Imaging	标配 Standard: 5MP; 选配 Optional: 12MP/20MP/25MP		
	分辨率 Resolution Ratio	4μm/7μm/10μm/15μm		
	镜头 Lens	远心镜头 telecentric lens		
运动机构 Motion Mechanism	照明 Lighting	RGBW LED		
	XY运动 XY Motion	AC伺服马达 AC servo motor		
	轨道调宽 Rail width adjustment	自动/手动 Automatic / Manual		
	流向 Direction	左到右或右到左, 可定制 Left-Right or Right-Left Customizable		
硬件 Hardware	轨道高度 Rail Height	900±30mm		
	电源 Power Supply	200V-230V AC 50/60Hz		
	功率 Power	2KW		
	气压 Air pressure	0.4-0.6MPa		
	重量 Weight	850-900KG		
检查规格 Checking Specifications	设备尺寸 Equipment Dimension	W1000*D1520*H1580mm		
	基板尺寸 PCB Size	510*460mm	510*460mm	510*350mm*2
选配功能 Optional Function	厚度 Thickness	≤6mm		
	人工智能 Artificial Intelligence	AI大数据训练中心 AI Data training center		
检查项目 Inspection Item	辅助功能 Auxiliary functions	离线编程软件、AI极速自动编程软件、远程集中复判、条码读取、OCR识别 Remote offline programming software, AI high-speed automatic programming software, centralized re judgment, barcode reading, OCR recognition		
	元件缺陷检测 Component detection	缺件、立碑、侧立、偏移、多件、异物、少锡等 Missing, Tombstoning, Billboarding, Offset, Extra Component, Foreign Material, Insufficient solder etc		
	焊点 Solder joint	多锡、少锡、短路、翘脚、锡珠等 Excess solder, Insufficient solder, Short circuit, Twisted feet, Solder ball etc		
	金手指测试 Golden finger test	沾锡、刮伤、异物、氧化、锡珠等 Excess solder, Scratch, Foreign Material, Oxidation, Solder ball		
	胶水检测 Glue detection	溢胶、少胶 Excess glue, Insufficient glue		